

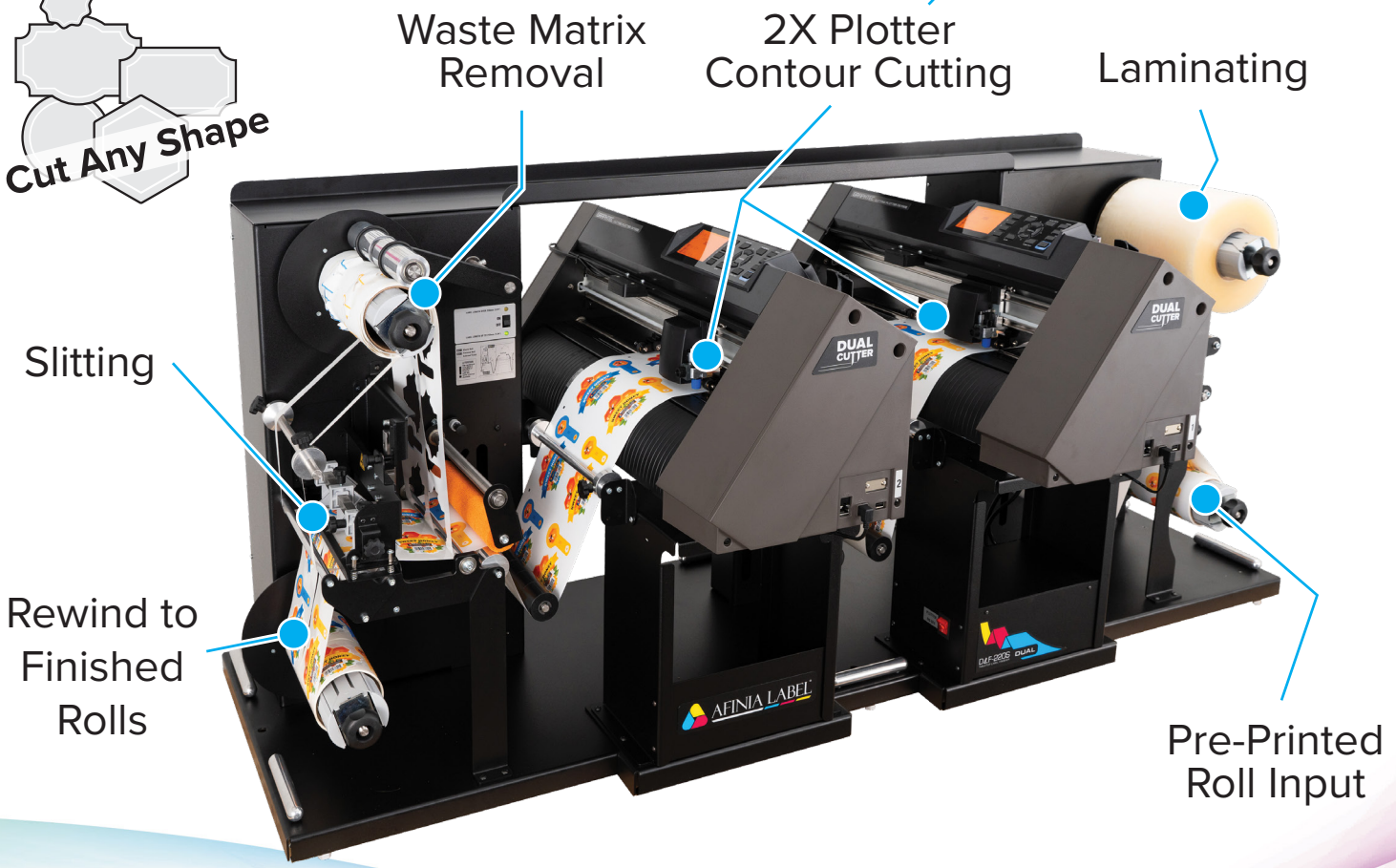
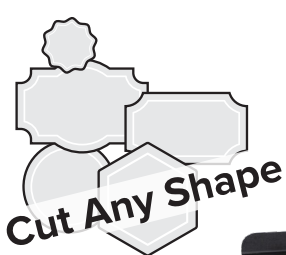
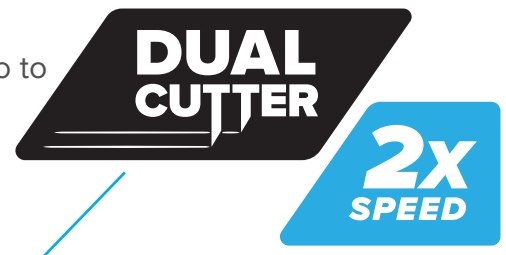


# Tabletop Digital Label Finishers

**Cut any shape digitally, without the use of dies**

The DLF-220S Dual Plotter Digital Label Finisher integrates unwinding, laminating, contour cutting, waste removal, slitting, and rewinding within a unified process.

Designed for on-demand, short-run label finishing, the system incorporates two plotter cutters to optimize cutting efficiency. This feature is not only intended to enhance production speed, but also to offer cost-effective operation for businesses looking to manage diverse label finishing demands effectively.



[afinialabel.com](http://afinialabel.com)

**US Office**  
 sales@afinialabel.com  
 +1 888.215.3966

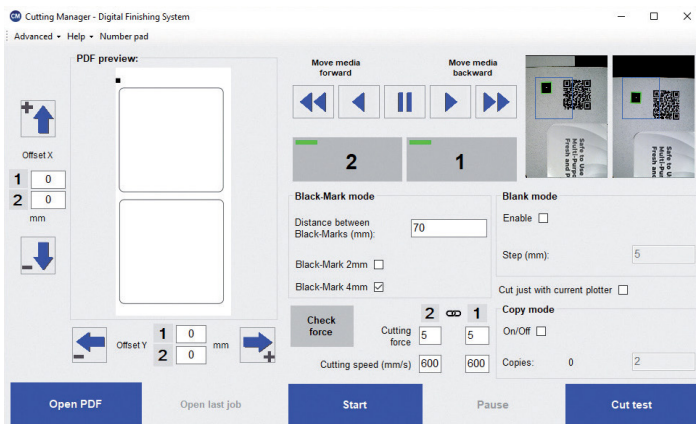


**UK Office**  
 sales@afinia.co.uk  
 +44 (0) 845.250.7949



## SPECIFICATIONS — DLF-220S Dual

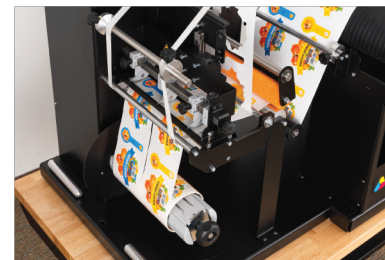
<b>Input / Output Roll Diameter</b>	7.87" (200mm)	<b>Maximum Cutting Speed</b>	24in/s (600mm/s) in all directions
<b>Maximum Web Width</b>	8.86" (225mm)	<b>Roll Core Size</b>	3" (76mm)
<b>Minimum Web Width</b>	4.25" (108mm)	<b>Agency Certifications</b>	CE, FCC, RoHS
<b>Maximum Cutting Width</b>	7.87" (200mm)	<b>Dimensions</b>	L = 172 cm (67.71") H = 75 cm (29.52") W = 78 cm (30.7")
<b>Maximum Label Length</b>	13.77" (350mm) with limitations		
<b>Minimum Label Length</b>	0.39" (10mm)	<b>Computer Requirements</b>	Software running with Windows 8.1 or later. Not supported by macOS. PC needs 2 USB ports for plotters.
<b>Number of Slitting Blades</b>	up to 8	<b>Power Requirements</b>	100-240 VAC, 240 watts
<b>Minimum Slitting Width</b>	0.75" (19mm)	<b>Programmable Cut Force</b>	20 gf - 300 gf in 31 steps (Max 300 gf)
<b>Lamination Module</b>	Yes	<b>Warranty</b>	One year parts and labor. Usage limitation may apply
<b>Maximum Media Thickness</b>	0.01" (0.25 mm) (10 mil)		
		<b>Afinia Part Number</b>	DLF-220S Dual: 40303



## Intuitive and Powerful Software

The integrated software, paired with CCD cameras, fine-tunes cutting positions.

The ease of importing a PDF cutting file further simplifies this process, allowing for easy adjustments on the fly.



[afinialabel.com](http://afinialabel.com)

**US Office**  
sales@afinialabel.com  
+1 888.215.3966



**UK Office**  
sales@afinia.co.uk  
+44 (0) 845.250.7949



**AFINIA LABEL**